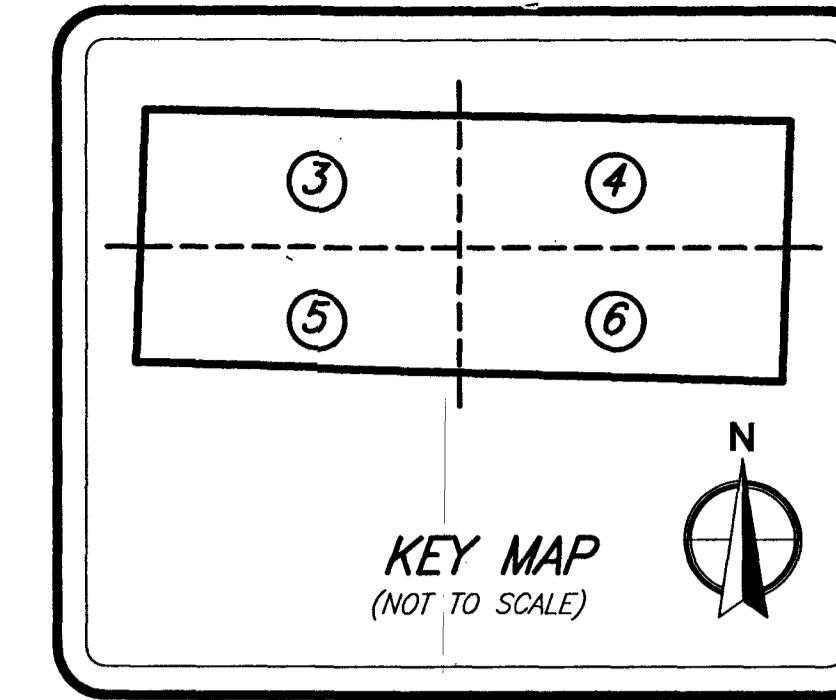
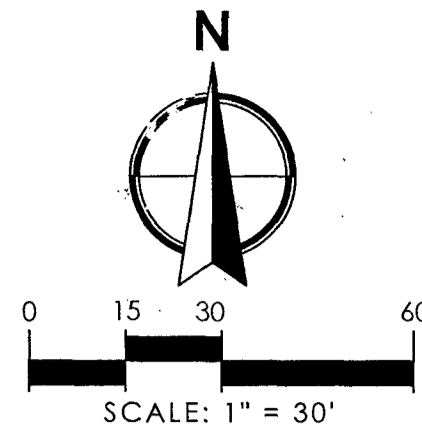


VINTAGE OAKS T1

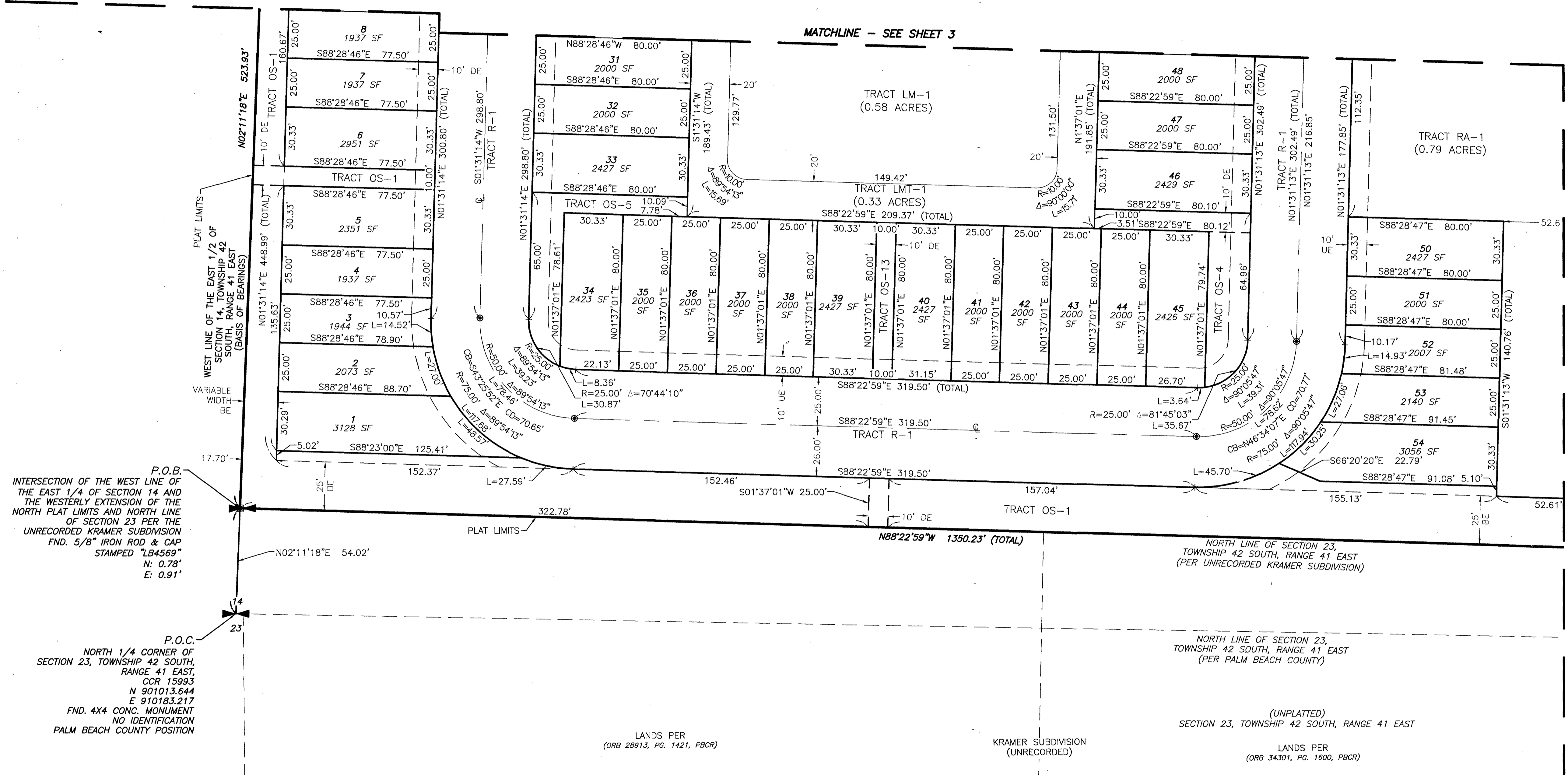
LOCATED IN SECTION 14, TOWNSHIP 42 SOUTH, RANGE 41 EAST
CITY OF PALM BEACH GARDENS
PALM BEACH COUNTY, FLORIDA

APRIL 2024



136

SHEET 5 OF 6 SHEETS



P.O.B.
INTERSECTION OF THE WEST LINE OF THE EAST 1/4 OF SECTION 14 AND THE WESTERLY EXTENSION OF THE NORTH PLAT LIMITS AND NORTH LINE OF SECTION 23 PER THE UNRECORDED KRAMER SUBDIVISION FND. 5/8" IRON ROD & CAP STAMPED "LB4569" N: 0.78' E: 0.91'

P.O.C.
NORTH 1/4 CORNER OF SECTION 23, TOWNSHIP 42 SOUTH, RANGE 41 EAST, CCR 15993 N 901013.644 E 910183.217 FND. 4X4 CONC. MONUMENT NO IDENTIFICATION PALM BEACH COUNTY POSITION

LANDS PER (ORB 28913, PG. 1421, PBCR)

KRAMER SUBDIVISION (UNRECORDED)

(UNPLATTED)
SECTION 23, TOWNSHIP 42 SOUTH, RANGE 41 EAST
LANDS PER (ORB 34301, PG. 1600, PBCR)

- LEGEND**
- BE = Buffer Easement
 - C/L = Center Line
 - CCR = Certified Corner Record
 - CONC. = Concrete
 - CB = Chord Bearing
 - CD = Chord Distance
 - Δ = Delta (Central Angle)
 - DE = Drainage Easement
 - FND. = Found
 - L = Length of Arc
 - LMT = Lake Maintenance Tract
 - LSE = Lift Station Easement
 - NAD = North American Datum
 - ORB = Official Records Book
 - ⊙ = Permanent Control Point (PCP)
 - PBCR = Palm Beach County Records
 - PG. = Page
 - PB = Plat Book
 - POB = Point of Beginning
 - POC = Point of Commencement
 - PRC = Point of Reverse Curvature
 - PRM = Permanent Reference Monument
 - R = Radius
 - R/W = Right-of-Way
 - SF = Square Feet
 - UE = Utility Easement
 - ⊠ = Set 4"x4" Concrete (PRM) W/Aluminum Disc Stamped "LB 7055 PRM"

TRACT AREA TABULATION	
TRACT	AREA (S.F.)
LM-1	25,447
LM-2	30,181
LMT-1	14,499
LMT-2	16,932
LST	1,500
OS-1	129,772
OS-2	2,690
OS-3	7,284
OS-4	2,374
OS-5	2,018
OS-6	4,280
OS-7	3,200
OS-8	1,664
OS-9	1,817
OS-10	800
OS-11	800
OS-12	800
OS-13	800
R-1	188,973
R-2	5,054
RA-1	34,525

2035 Vista Parkway, West Palm Beach, FL 33411
Phone No. 866.909.2220 www.wginc.com
Cert No. 6091 - LB No. 7055

THIS INSTRUMENT WAS PREPARED BY KELSEY M. SMITH P.S.M., PROFESSIONAL SURVEYOR AND MAPPER, LICENSE NO. 7096 FOR THE FIRM: WGI, INC.